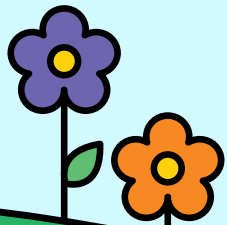
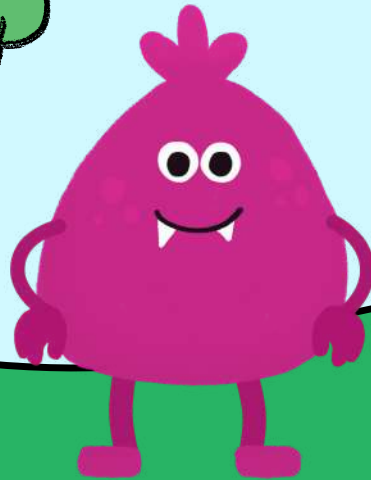
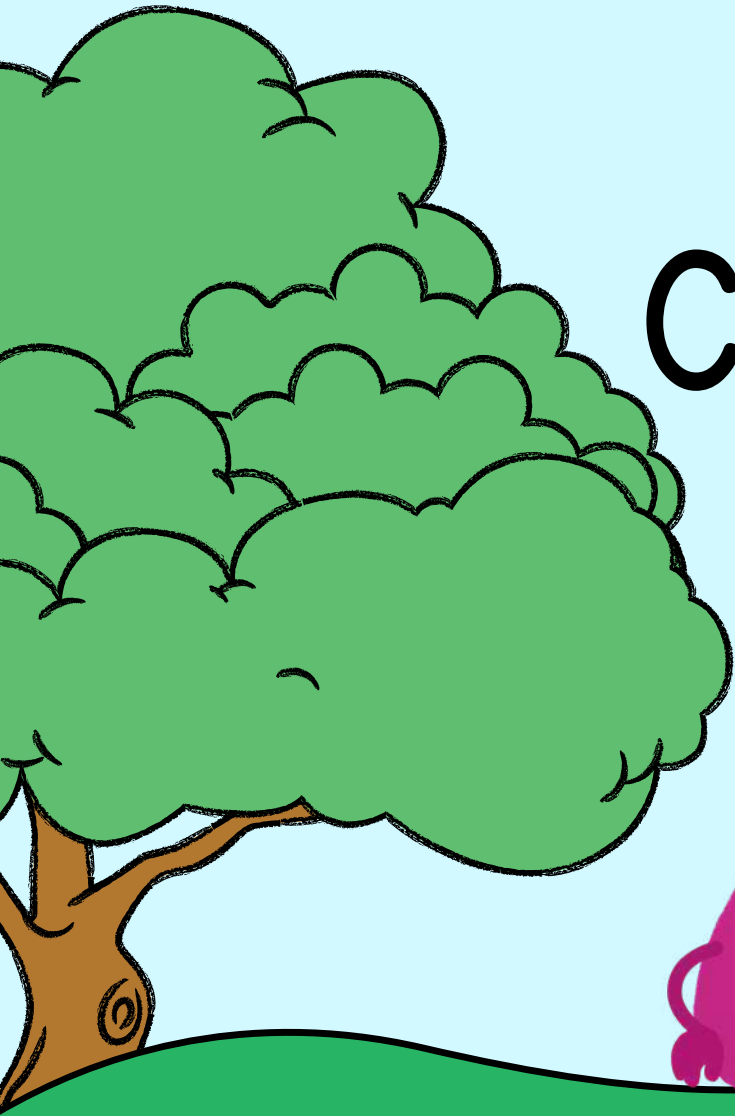


# Getting Connected



# Meet our friends in Beastie Valley



**Here we are in Beastie Valley!**

**This is the Beastie community.  
Everyone does their best and  
wants what's best for  
themselves... and the other  
beasties.**



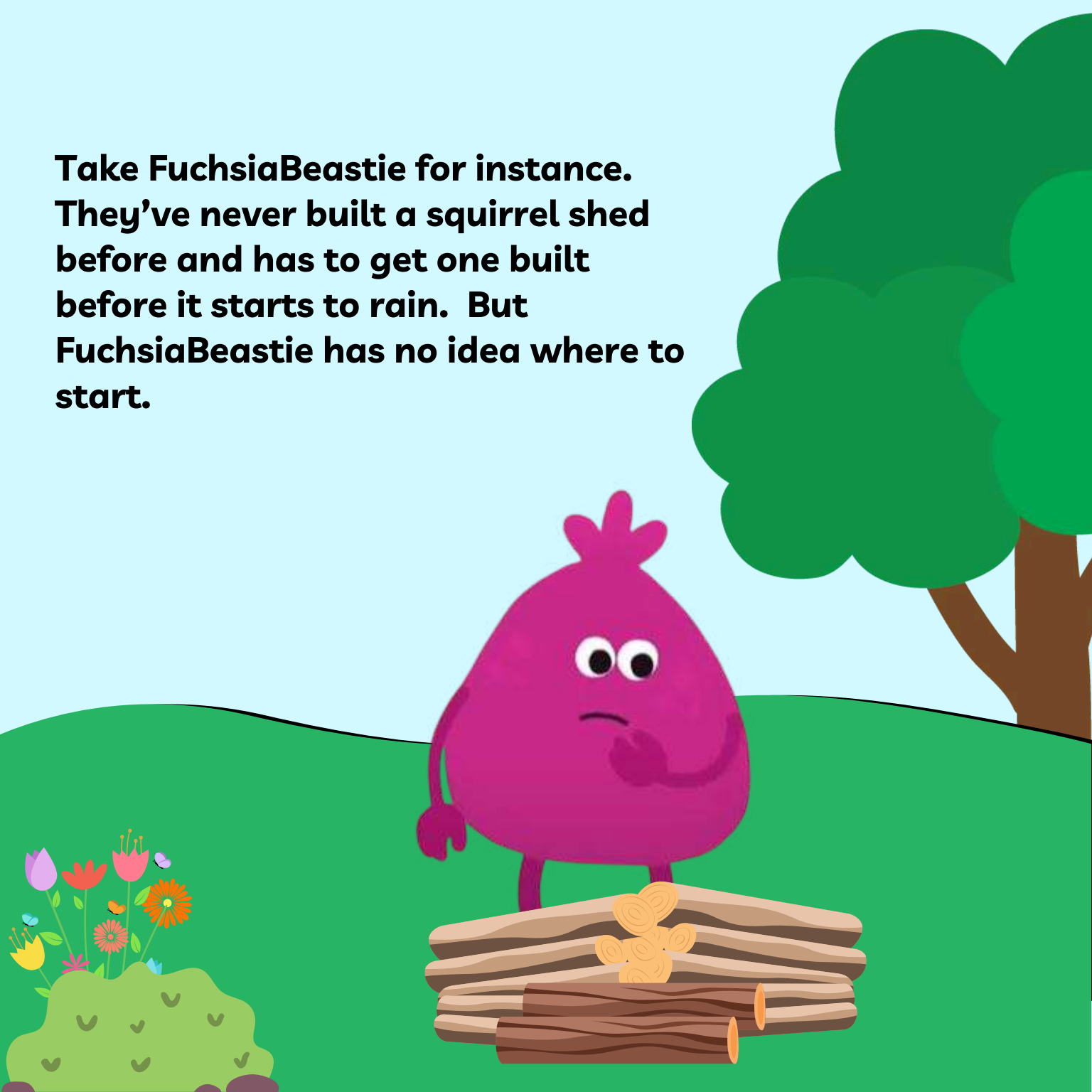
**Once in a while, this isn't always so easy. Hiccups happen, that's life.**

**But there's always *someone* you can turn to who's more experienced or older - or just a good listener.**

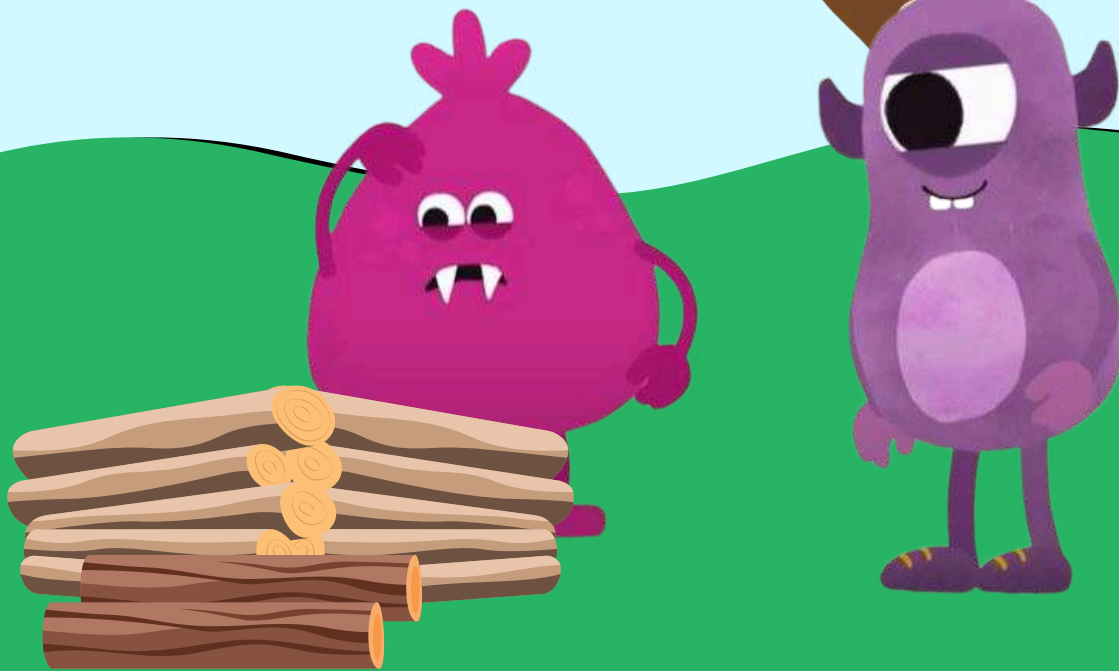
**Cuz sometimes all you need is a pal to listen and that's enough.**



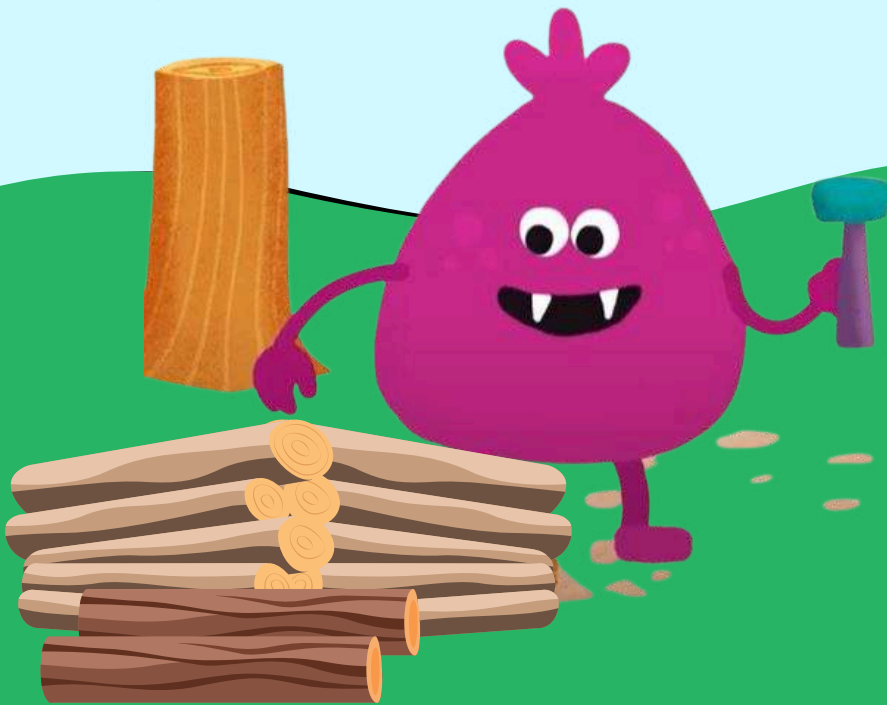
**Take FuchsiaBeastie for instance. They've never built a squirrel shed before and has to get one built before it starts to rain. But FuchsiaBeastie has no idea where to start.**



Now, LavenderBeastie here is older, wiser, and very helpful. LavenderBeastie sees that FuchsiaBeastie is having a tough time of it and shares that they once had to build *their* first squirrel shed. LavenderBeastie doesn't tell FuchsiaBeastie what to do, nor does LavenderBeastie build it for FuchsiaBeastie; they just describe a few lessons that were learned when they were in that situation once upon a time.



**FuchsiaBeastie is visibly relieved and, armed with this new knowledge, thanks LavenderBeastie for the input - then gets to work.**

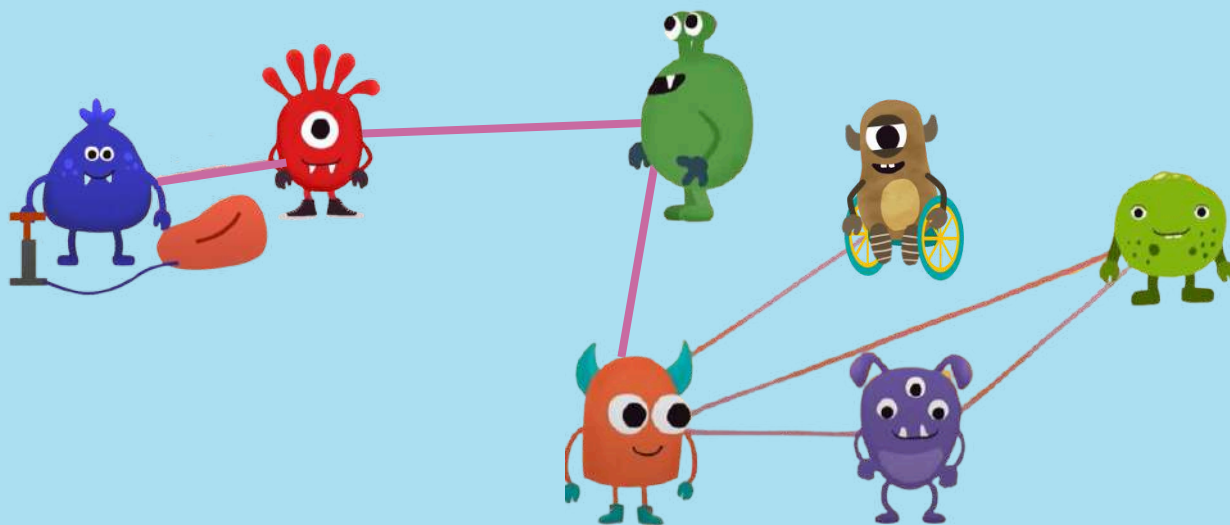


**LavenderBeastie and FuchsiaBeastie are connected now.  
Connected by the sharing of knowledge and support.**

**This is what a community is.**

**Check it out: RedBeastie needed a pillow chair inflated  
and BlueBeastie had a pump, and GreenBeastie needed  
a bandage on their knee, which RedBeastie was really  
good at.**

**And LavenderBeastie helped CopperBeastie with their  
problem ,and OrangeBeastie got advice from  
PurpleBeastie, and a bunch of other beasties.**





**And so on and so on until you have this kind of web of support connecting anyone who needs support with someone who has support to offer.**

**Once when MaroonBeastie needed some baskets to keep their tree cone collection in, ChartreuseBeastie doesn't have any, so that particular connection doesn't exist. But then MaroonBeastie discovered that GreenBeastie had a whole bunch of extra baskets and was more than happy to connect.**

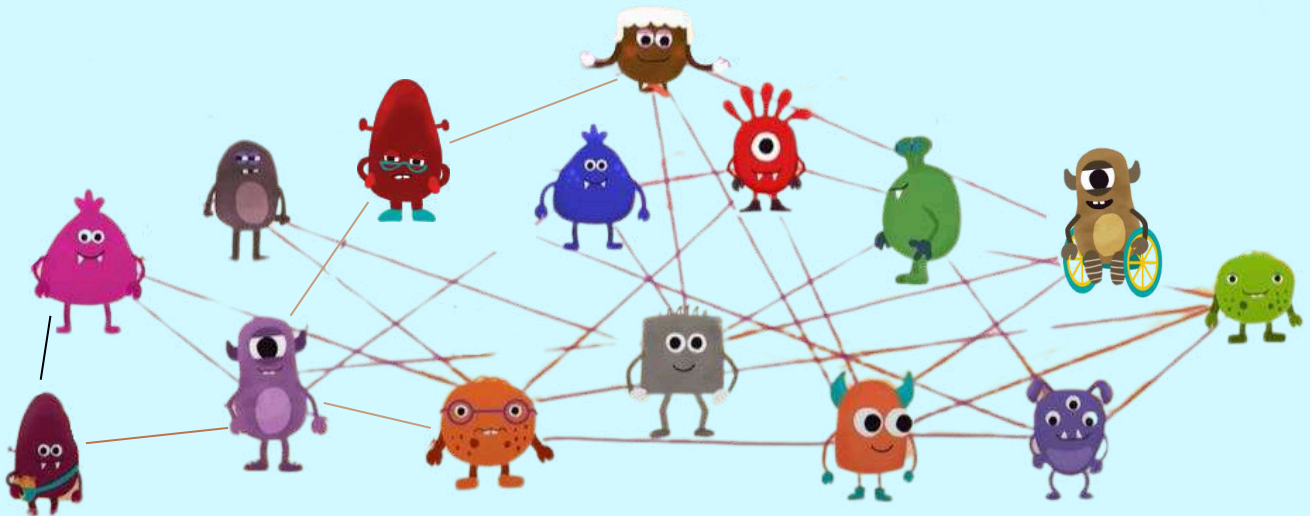


**Or, when OrangeBeastie needed their broken horn dealt with. There were a lot of beasties that they didn't feel comfortable going to - so for that particular problem, it took a little effort to find that web. But, once PurpleBeastie suggested SilverBeastie, it all came together.**



**A strong web is one with lots of connections and that means it won't collapse if one or two of those connections break for whatever reason. Everyone can still stay connected in whatever way they have to offer. And they can help repair it if it breaks.**

**Once you see the web in your community, it's hard to unsee it. You can see how everyone is connected, you can see how *you're* connected. And you can see how much stronger the web is because of you.**



CREATED BY



Created by the Sexual Assault Crisis Centre of Essex County  
in partnership with Turtlebox Productions

Story and character images used with permission from  
Windsor-Essex Children's Aid Society

