

# Hanni and the Magic Window



**This simplified version of 'Hanni and the Magic Window' could be used:**

- to pre-teach the story before reading the rhyming version.
- to recap the main plot points.
- to develop a sensory story for learners with special educational needs and disabilities (SEND) or additional learning needs (ALN).
- as an ordering activity to help learners retell the story.



**NOMINET**

# Hanni and the Magic Window





This is Hanni.

Hanni's house has a magic window.



The magic window let's Hanni see amazing things.



The magic window shows Hanni fishes under the sea.



The magic window shows Hanni what it's like to drive a racing car.

The magic window shows Hanni outer space.

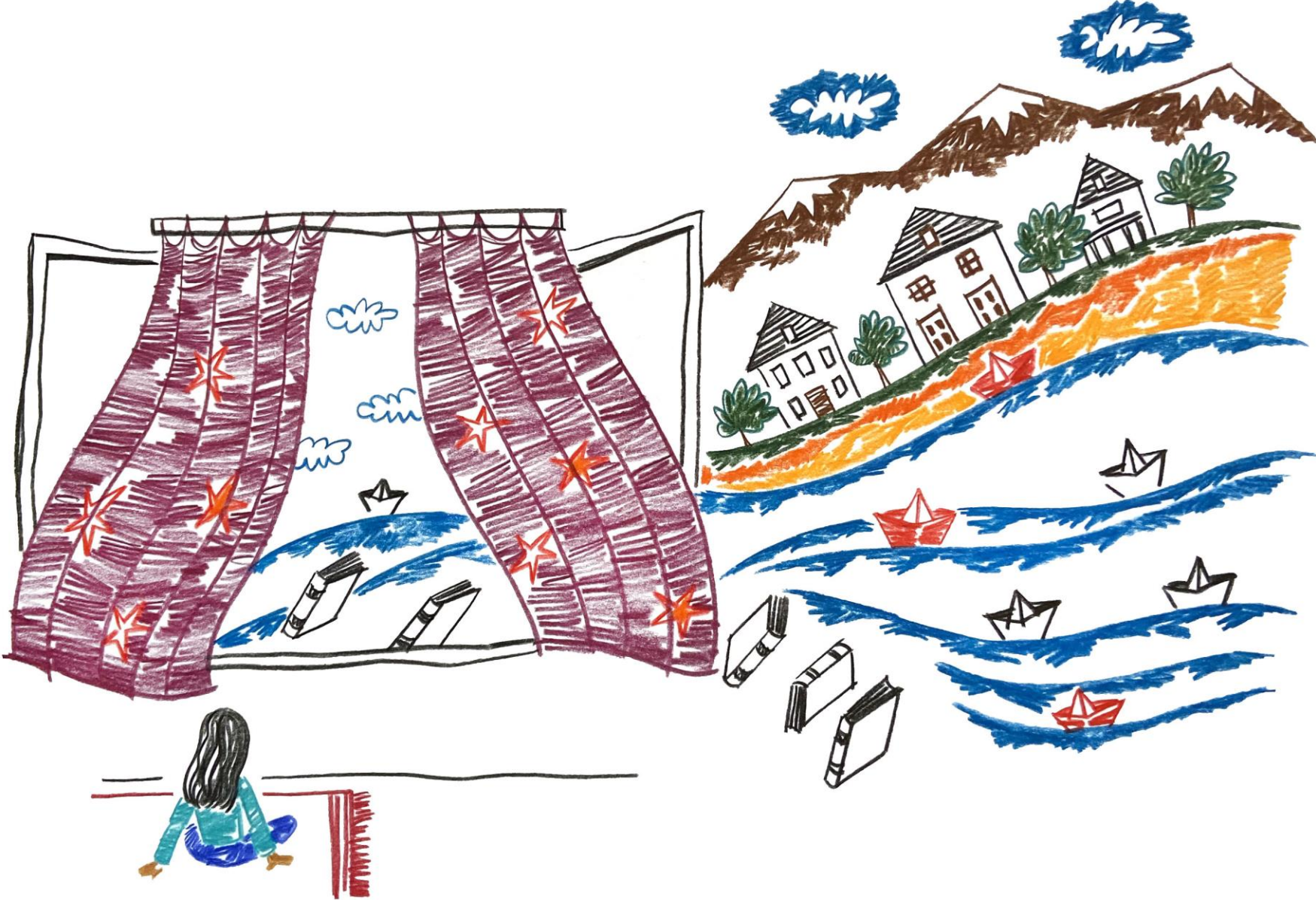


The magic  
window shows  
Hanni her family  
who live far  
away.





The magic window makes Hanni happy.



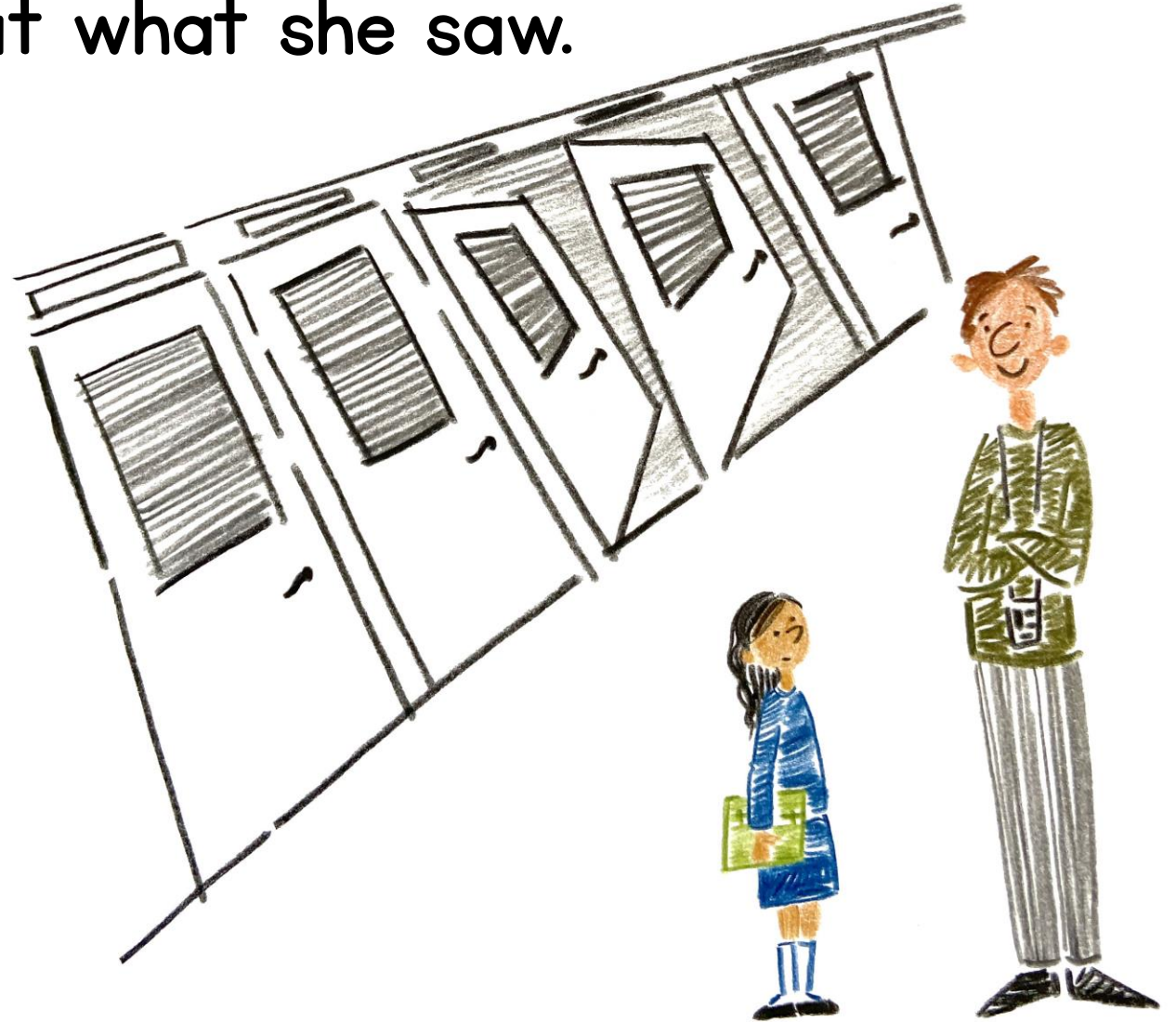
One day Hanni looks in the window and what she sees makes her feel worried.



Hanni doesn't tell  
Mum what she saw in  
the magic window.



Hanni doesn't know what to say to her teacher about what she saw.



Hanni doesn't want to play with her friends because she feels sad.



Mrs Rodwell asks Hanni if she wants to talk.



Hanni explains what she saw in the magic window and how it made her feel.

Mrs Rodwell helps her talk to her teacher.



Hanni's teacher helps her talk to her Mum.



Hanni's Mum helps her feel better by giving her a big hug.



You can always talk to a grown up if you feel worried or sad.

They are here to help.

It can help you feel better.

